



M195584

TV WANDHALTERUNG, NEIGBAR

INSTRUCTION MANUAL



SPECIFICATIONS

Maximum Display Size: 37" - 65"

Maximum Load: 45 kg

Maximum Mounting Pattern: 600 mm x 400 mm

Tilt Range: +12°

Profile: 3.6 cm

WARNINGS

Read these instructions before you begin. If you are unsure of any part of the process, contact a professional contractor or installer for assistance. Improper installation can result in injury or damage.


The wall or mounting surface must be capable of supporting the combined weight of the mount and the display; if not, the structure must be reinforced.

Locate pipes, wires, or any other hazards in the wall where you wish to install the mount before drilling.

Safety gear and proper tools must be used. Failure to do so can result in injury or damage.

Two people are recommended for installation. Do not attempt to lift a heavy display without assistance.

Follow all instructions and recommendations regarding adequate ventilation and suitable locations for mounting your display. Consult the owner's manual for your particular display for more information.

 **CAUTION:** This wall mount is intended for use only with the maximum weight of 45 kg. Use with heavier than the maximum weights indicated may result in instability causing possible injury.

TOOLS REQUIRED



Crosshead
Screw Driver



Drill
3 mm Drill Bit for Drywall
or
8 mm Masonry Bit for
Concrete Installation



Pencil

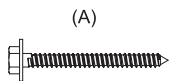


Level



Stud Finder

HARDWARE KIT



(A)

x4



(B)

x4



(C)

x4



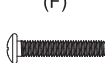
(D)

x8



(E)

M6 x 12 Screw
x4



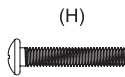
(F)

M6 x 30 Screw
x4



(G)

M8 x 12 Screw
x4



(H)

M8 x 30 Screw
x4

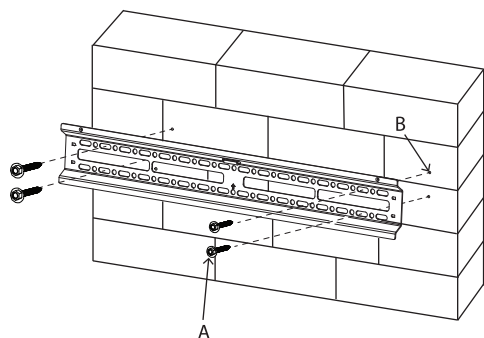


M195584

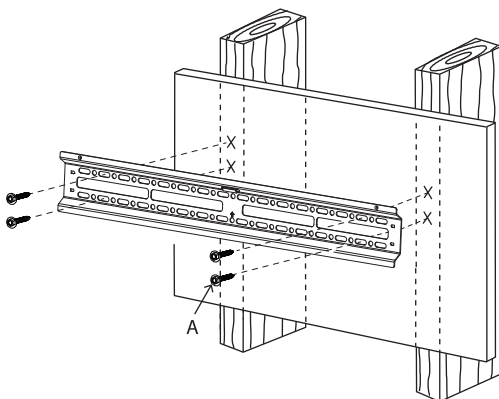
TV WANDHALTER NEIGBAR

1. Attach wall plate to wall

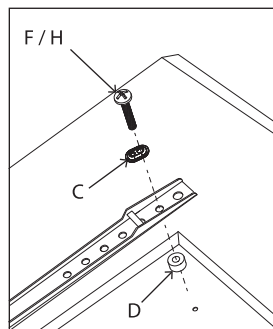
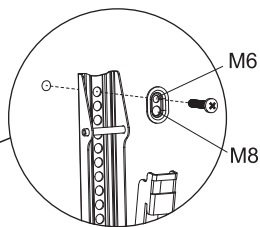
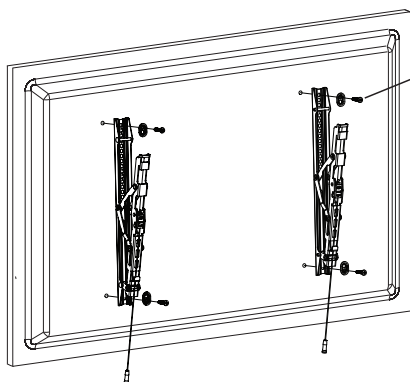
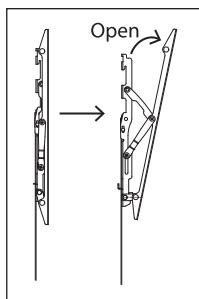
i. Concrete / brick wall.



ii. Wood / stud wall.



2. Attach interface arms to screen

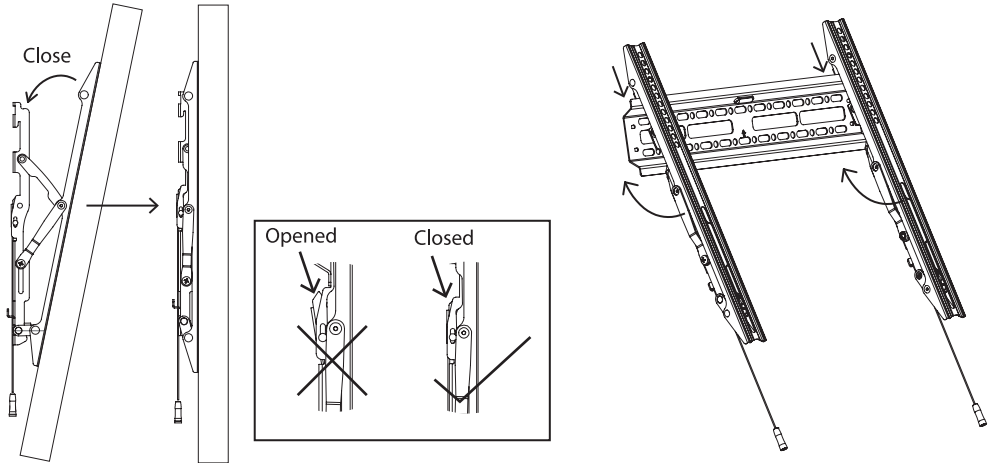




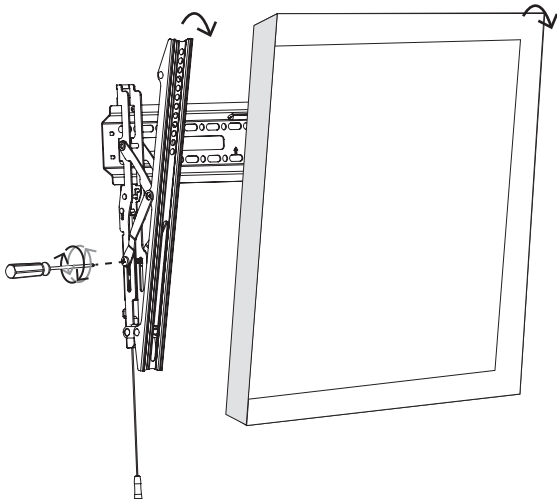
M195584

TV WANDHALTER NEIGBAR

4. Hook screen onto wall mount and secure



5. Tilt Adjustment



6. Removing Screen

