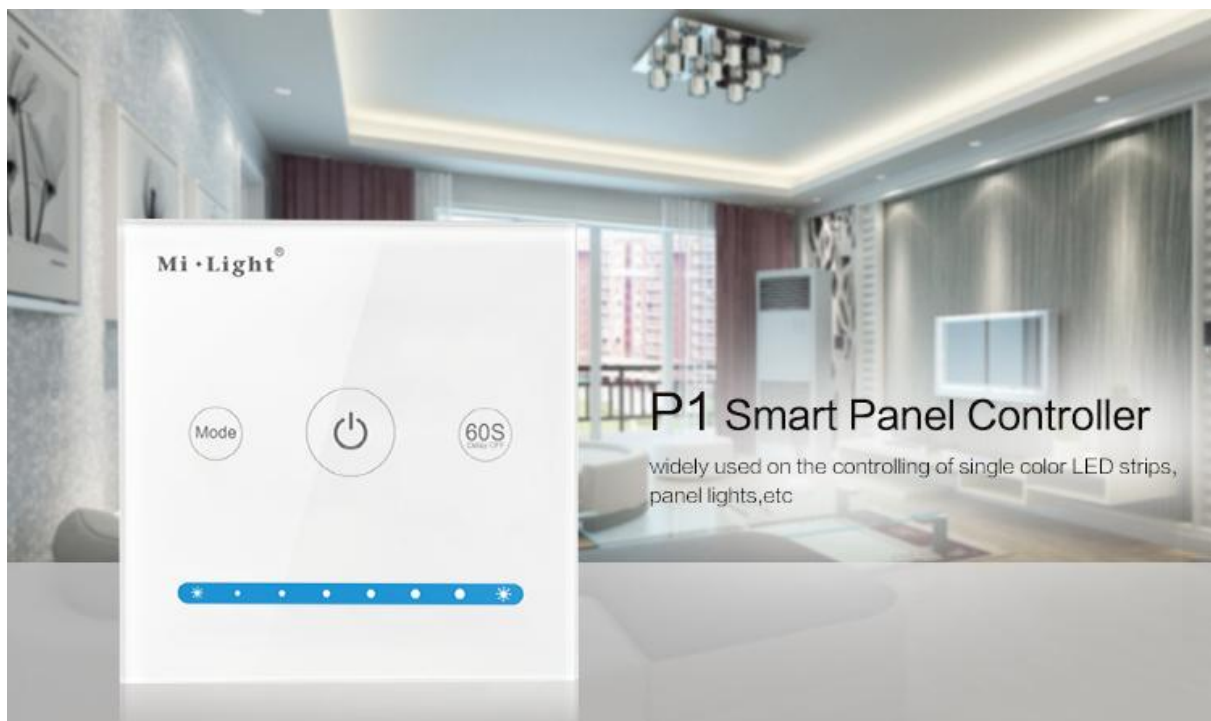
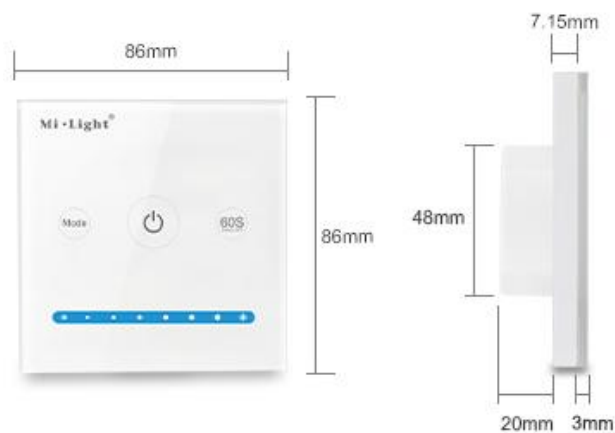


P1 MiLight Smart Panel Controller

Nástenný panel pre ovládanie jednofarebných LED pásov a svetiel. Určený pre montáž do inštaláčnej krabičky.



Napájacie napätie: 12-24V DC
(podľa napájania LED pásu/svetiel)
Výstupný prúd: 5A/kanál
Zapojenie: spoločná anóda
Hmotnosť: 122g



Vlastnosti

- Dotykový posuvník pre plynulú reguláciu jasu
- Oneskorené vypnutie: tlačidlo pre vypnutie osvetlenia po 60 sekundách
- 9 režimov svietenia
- Vysoko citlivý kapacitný ovládací panel
- Osvetlený vypínač pre orientáciu v tme
- Sklený panel s veľmi dobrou odolnosťou voči rozbitiu a škrabancom
- Zvuková odozva pri dotyku



Brightness Dimming



60S Delay Off



Sensitive Touching



LED Night indicating lamp



Scratch Resistance



Contextual Mode

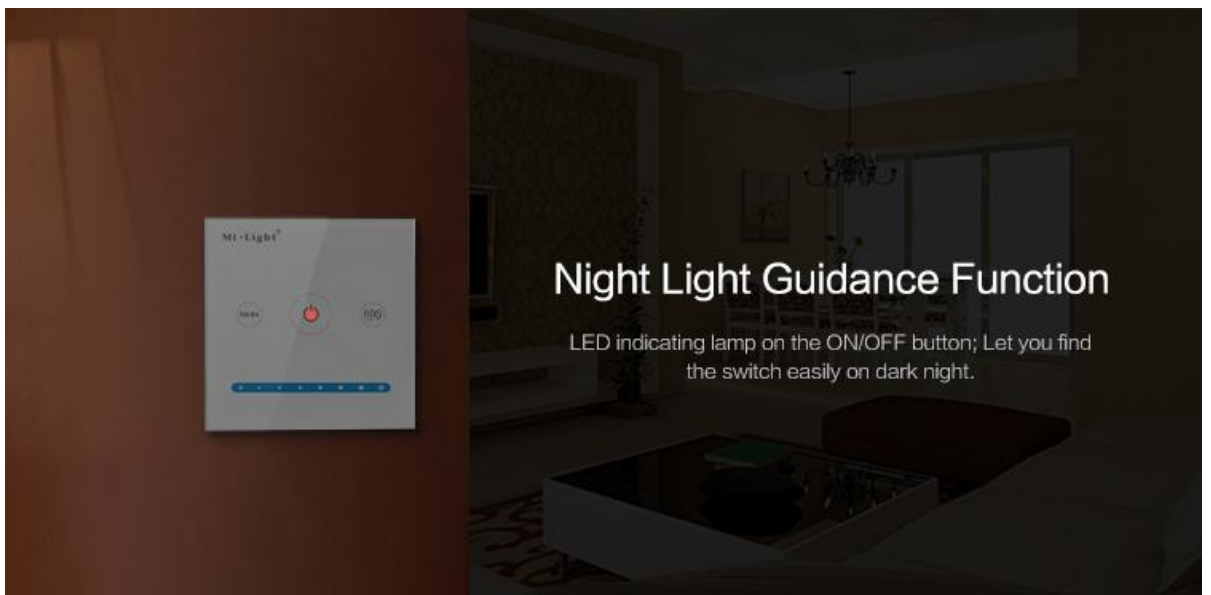
Timed Controlling; Automatically turn of the light after 60seconds

Touch "60s Delay OFF", light will be off automatically after 60seconds, let you forget the annoyance of losing sight after turn off the light by hand.



0.1%~100% brightness dimming

Pursue the quality; Brightness dimming(0.1%~100%);
let the user get the brightness randomly.



Capacitive touch screen Stable touch screen

high precision Capacitive touch screen IC, touching screen is very sensitive.



High-end safe glass panel Scratch resistance

Adopt the high-end and elegant glass panel with good crushing and scratching resistance.



9 color changing mode

Choose the 9 modes (Gradual change, Jump to change, flash) randomly;
Touching one button to choose the scene you want.

Mi·Light®

Mode



60S
Delay Off



Mi·Light®

Mode



60S
Delay Off



Touching button with sound

Touching any button, red LED indicating lamp will change and with beautiful sound.

Functional Diagram

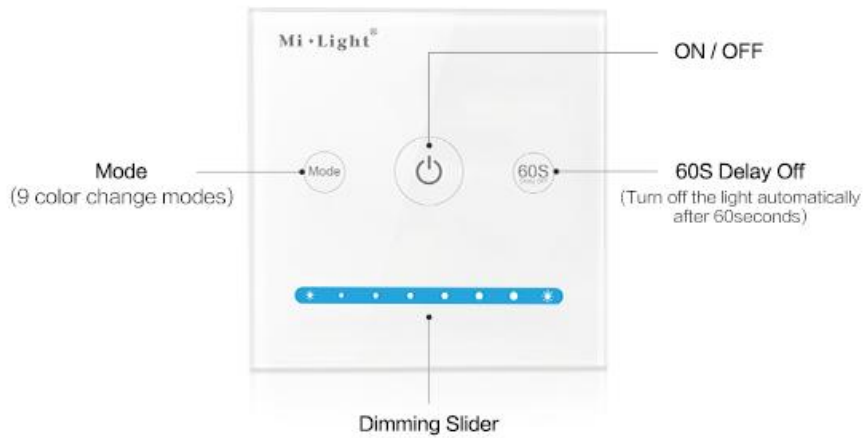
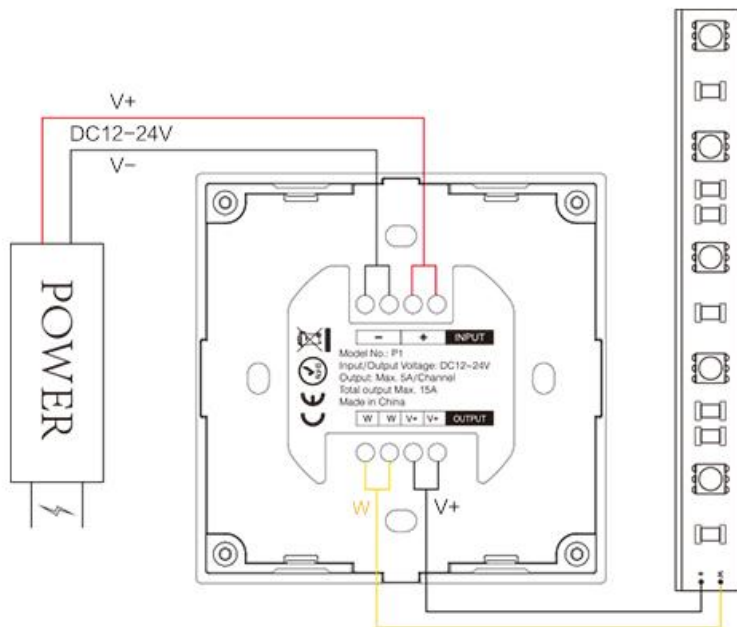


Diagram of connecting to LED strip

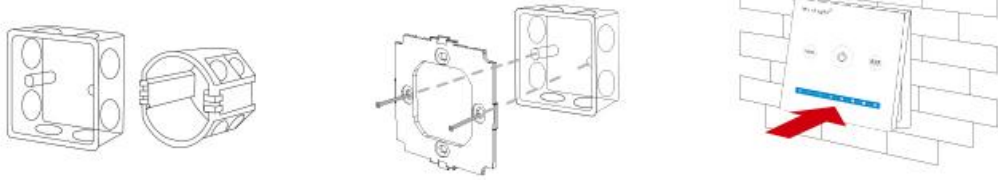


Attention:

1. Please check whether the input voltage of the constant voltage power supply is in accordance with the controller, and please check the connection of both the cathode and anode.
2. The working Voltage is DC12-24V, the controller will be broken if the voltage is higher than 12-24V.
3. When Installation, pls handle with care to avoid the broken of the glass panel.

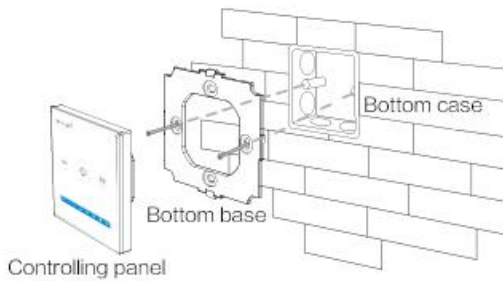
Installation / Dismantlement

Method of installation

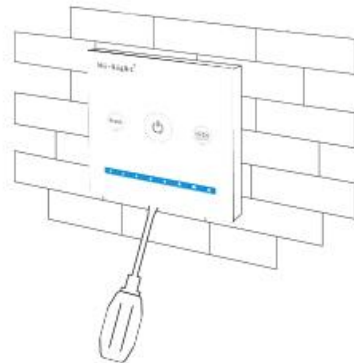


1. Install the bottom case into the wall;
Above are the standard bottom cases.
2. Fix the controller base on the
bottom case with screw.
3. Clicks into the upper side of glass panel
on the controller base, then press the
lower side slightly to make it clicks into
the controller base.

Installation Overview



Method of dismantlement



Plug into the below bayonet with a screwdriver,
and upwarp screwdriver, then you can dismantle
the controller.