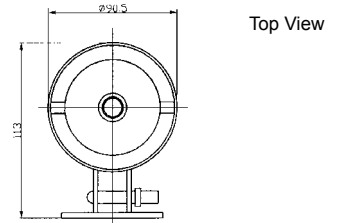


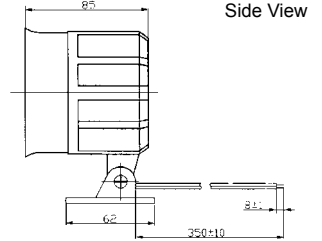
KPH-91T SERIES HORN SPEAKER



DIMENSIONS



Top View



Side View

all dimensions are in mm

Model No	KPH-91T
Impedance	4/8/12 Ohm (at 1 KHz)
Voice Coil Dia.	Ø25.4mm
Magnet Size	60 x 32 x 10mm
Resonant Freq.	Fo. 1200Hz±10%
Power Rating	15W RMS
Freq.Resp.	500~8000Hz
Min. S.P.L.	100dB(at 1m/1W/1KHz)
Operating Temp.	-20~+60 °C
Weight	350g±10g

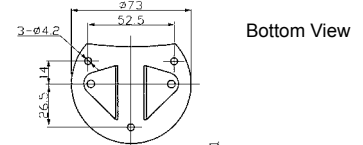
Color black
ABS Housing Material
Lead Terminal

* Value applying at rated voltage

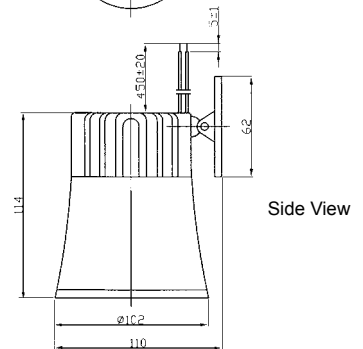
KPH-100T SERIES HORN SPEAKER



DIMENSIONS



Bottom View



Side View

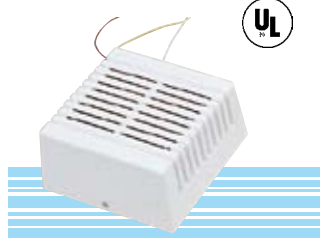
all dimensions are in mm

Model No	KPH-100T
Impedance	4/8/12 Ohm (at 1 KHz)
Voice Coil Dia.	Ø25.4mm
Magnet Size	60 x 32 x 10mm
Resonant Freq.	Fo. 1.5KHz±10%
Power Rating	15W RMS
Freq.Resp.	800~8000Hz
Min. S.P.L.	105dB±3dB(at 1m/2.83V/1KHz)
Operating Temp.	-20~+60 °C
Weight	360g±10g

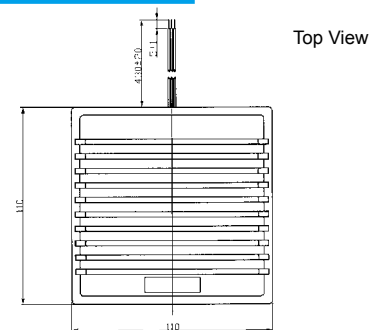
Color Black
ABS Housing Material
Lead Terminal

* Value applying at rated voltage

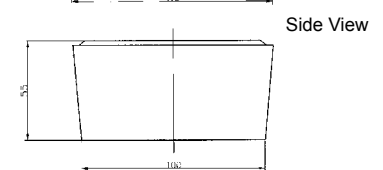
KPH-111S SERIES HORN SPEAKER



DIMENSIONS



Top View



Side View

all dimensions are in mm

Model No	KPH-111S
Impedance	4/8/12 Ohm (at 1 KHz)
Voice Coil Dia.	Ø19.45mm
Magnet Size	60 x 32 x 10mm
Resonant Freq.	Fo. 500Hz±10%
Power Rating	15W RMS
Freq.Resp.	500~8000Hz
Min. S.P.L.	94dB(at 1m/1W/1KHz)
Operating Temp.	-20~+60 °C
Weight	379g±10g

Color white
ABS Housing Material
Lead Terminal

* Value applying at rated voltage