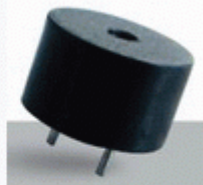


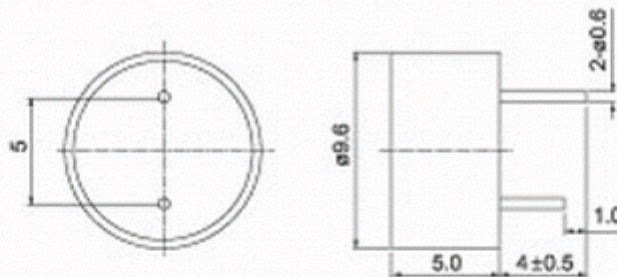
# Electro-magnetic Transducer

## Shape



Type	BMT0905XH05	BMT0912XH05
Rated Voltage	5 Vdc	12Vdc
Operating Voltage	4...6Vdc	8-16Vdc
a)Rated Current	Max. 25mA	Max. 30mA
a)Sound Output at 10cm	min. 80dB	min. 82dB
a)Resonant Frequency	2600 ± 300Hz	2700 ± 300Hz
Operating Temperature	-25...+70 °c	
Storage Temperature	-30...+80 °c	
Weight	1g	
a)Value applying at rated voltage.		

## Dimension



## Characteristic

